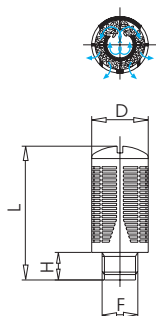


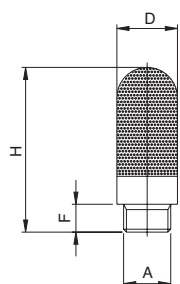
# Silencers



## Plastic Silencers



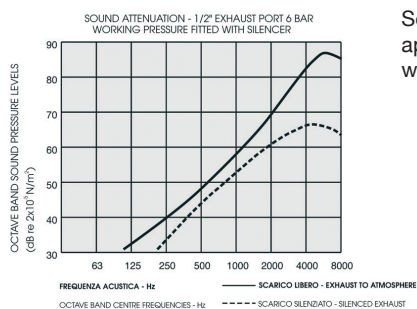
Code	F	H	D	L
YPS-18	1/8"	6	16	31
YPS-14	1/4"	8	20	43
YPS-38	3/8"	9.5	24	56
YPS-12	1/2"	10	24	56
YPS-34	3/4"	18	49	114
YPS-1	1"	18	49	114



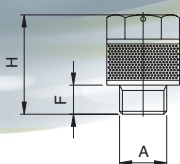
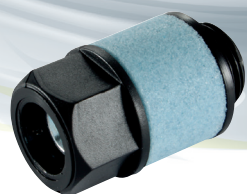
### Technical Characteristics

**Maximum pressure:** 10 bar  
**Minimum temperature:** -15°C  
**Maximum temperature:** +100°C  
**Filtration threshold:** 75 µm

In the diagram is shown the frequency distribution of the sound energy in an 6 bar air jet from a typical 1/2" control valve exhaust port. The critical region is that between 1 and 4 KHz, the range where psychological effects at high noise levels are most damaging. Sound reduction for this silencer is approx mately 20-25 dB at 6 bar working pressure.



Code	A	F	H	D
PS-M5	M5	4	23	6.5
PS-18	1/8"	6	34	12.5
PS-14	1/4"	7	42.5	15.5
PS-38	3/8"	11.5	66	25.1
PS-12	1/2"	11	78	23.5
PS-34	3/4"	15.5	130	38.5



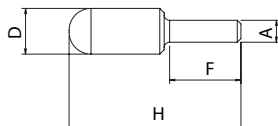
### Technical Characteristics

**Maximum pressure:** 10 bar  
**Minimum temperature:** -15°C  
**Maximum temperature:** +100°C  
**Filtration threshold:** 75 µm

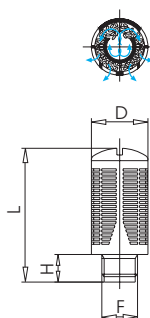
Code	A	F	H	CH1	CH2
RS-18	1/8"	6	20.5	13	2.5
RS-14	1/4"	7	29	15	4
RS-38	3/8"	8	38	20	6
RS-12	1/2"	10	50	25	8

# Silencers

## Plastic Silencers



Code	A	F	H	D
S03STPI-6	6	17	45	13
S03WBPI-8	8	18	43.5	14
S04STPI-10	10	22.7	57.5	16
S05STPI-12	12	24.5	82	19

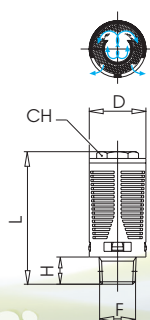


### Technical Characteristics

Maximum pressure: 6 bar  
Minimum temperature: -10°C  
Maximum temperature: +50°C

dB = Noise level in (dB) at 6 bar

Code	F	H	D	L	dB
7070-1/8	1/8"	6	15	32.5	87
7070-1/4	1/4"	8	19.5	43	84
7070-3/8	3/8"	11	24.5	58	90
7070-1/2	1/2"	11	24.5	58	90
7070-3/4	3/4"	18	48	115	91
7070-1	1"	18	48	115	90



### Technical Characteristics

Maximum pressure: 6 bar  
Minimum temperature: -10°C  
Maximum temperature: +70°C

dB = Noise level in (dB) at 6 bar

Code	F	H	D	L	CH	dB
7080-1/8	1/8"	6	16	34	2	87
7080-1/4	1/4"	8	19	44	12	90
7080-3/8	3/8"	10	24	56	17	92
7080-1/2	1/2"	10	24	56	17	92
7080-3/4*	3/4"	18	48	115	-	-
7080-1*	1"	18	48	115	-	-

\*Slotted Head