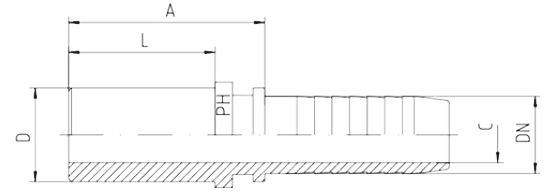
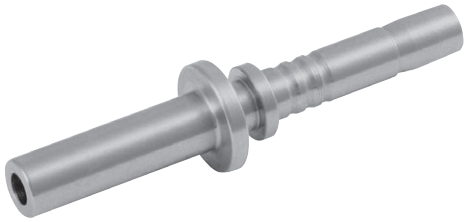


Standpipes, Straight



- Inch tube, straight

Hose	Bore	Tube OD	Approx. Dimensions			Order Code
DN		D	A	C	L	
06	1/4"	1/4" = 6.35mm	31.0	4.0	22.0	BE-14-DN06
10	3/8"	3/8" = 9.52mm	34.0	7.0	25.0	BE-38-DN10
08	5/16"	5/16" = 7.94mm	31.5	5.5	23.0	BE-516-DN08
12	1/2"	1/2" = 12.70mm	38.5	9.5	30.0	BE-12-DN12
16	5/8"	5/8" = 15.88	45.0	12.5	36.0	BE-58-DN16
19	3/4"	3/4" = 19.05	51.0	14.5	40.0	BE-34-DN19
25	1"	1" = 25.40	56.0	20.0	44.0	BE-1-DN25
31	1.1/4"	1.1/4" = 31.75	62.0	25.5	50.0	BE-114-DN31
38	1.1/2"	1.1/2" = 38.10	62.0	31.5	50.0	BE-112-DN38