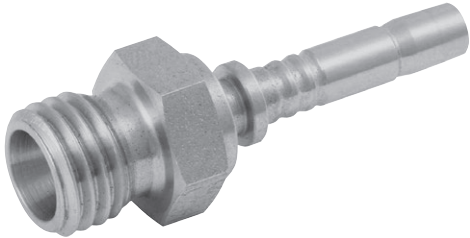
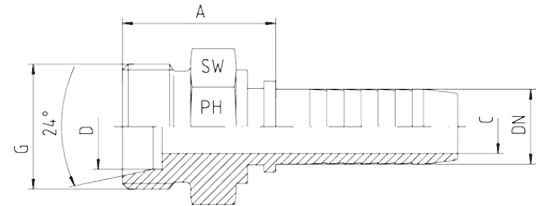


Metric Male 24° Cone Seat, L Series DIN 2353



- For compression couplings
- DIN 2353 / DIN EN ISO 8434-1 with 24° cone
- Light series = CEL



| Hose | Bore | Thread | Tube OD | Approx. Dimensions | | | Order Code |
|------|--------|-----------|---------|--------------------|------|----|-------------|
| DN | | G | D | A | C | SW | |
| 05 | 3/16" | M12 x 1.5 | 6 | 21.5 | 3.0 | 14 | CEL-06-DN05 |
| 06 | 1/4" | M12 x 1.5 | 6 | 23.0 | 4.0 | 14 | CEL-06-DN06 |
| 05 | 3/16" | M14 x 1.5 | 8 | 21.5 | 3.0 | 14 | CEL-08-DN05 |
| 06 | 1/4" | M14 x 1.5 | 8 | 23.0 | 4.0 | 14 | CEL-08-DN06 |
| 06 | 1/4" | M16 x 1.5 | 10 | 25.0 | 4.0 | 17 | CEL-10-DN06 |
| 08 | 5/16" | M16 x 1.5 | 10 | 24.5 | 5.5 | 17 | CEL-10-DN08 |
| 10 | 3/8" | M16 x 1.5 | 10 | 24.5 | 7.0 | 17 | CEL-10-DN10 |
| 06 | 1/4" | M18 x 1.5 | 12 | 24.5 | 4.0 | 19 | CEL-12-DN06 |
| 08 | 5/16" | M18 x 1.5 | 12 | 24.5 | 5.5 | 19 | CEL-12-DN08 |
| 10 | 3/8" | M18 x 1.5 | 12 | 24.5 | 7.0 | 19 | CEL-12-DN10 |
| 12 | 1/2" | M18 x 1.5 | 12 | 25.5 | 9.5 | 19 | CEL-12-DN12 |
| 10 | 3/8" | M22 x 1.5 | 15 | 26.0 | 7.0 | 22 | CEL-15-DN10 |
| 12 | 1/2" | M22 x 1.5 | 15 | 27.0 | 9.5 | 22 | CEL-15-DN12 |
| 12 | 1/2" | M26 x 1.5 | 18 | 29.0 | 9.5 | 27 | CEL-18-DN12 |
| 16 | 5/8" | M26 x 1.5 | 18 | 28.0 | 12.5 | 27 | CEL-18-DN16 |
| 19 | 3/4" | M26 x 1.5 | 18 | 30.0 | 14.5 | 27 | CEL-18-DN19 |
| 16 | 5/8" | M30 x 2 | 22 | 32.5 | 12.5 | 30 | CEL-22-DN16 |
| 19 | 3/4" | M30 x 2 | 22 | 35.0 | 14.5 | 30 | CEL-22-DN19 |
| 19 | 3/4" | M36 x 2 | 28 | 34.0 | 19.5 | 36 | CEL-28-DN19 |
| 25 | 1" | M36 x 2 | 28 | 35.0 | 20.0 | 36 | CEL-28-DN25 |
| 31 | 1.1/4" | M45 x 2 | 35 | 39.0 | 25.5 | 46 | CEL-35-DN31 |
| 38 | 1.1/2" | M52 x 2 | 42 | 45.0 | 31.5 | 55 | CEL-42-DN38 |