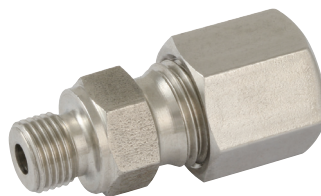
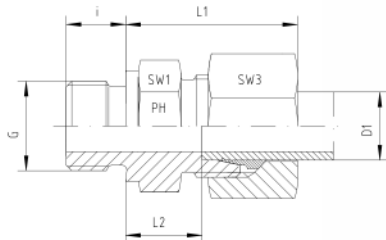


316 Stainless Steel DIN 2353 Tube Fittings



Male Stud Couplings



Stainless Steel 1.4571 Temperature Range:
-60°C to +400°C (DIN 17 440, AD W 10)
Seal Temperature Range:
-20°C to +200°C (FPM eg Viton)

*Male Stud Couplings
LL- and L-Series
Thread: BSP - Parallel
Sealing by Sealing Shoulder Form B*

Series	Pressure PN	Tube O.D. D1	Thread G	Approx. Dimensions					Order-Code Standard
				L1	L2	i	SW1	SW3	
LL	100	4	G 1/8"	19,0	9,5	8	14	10	GE-LLR-04-G 1/8"
LL	100	6	G 1/8"	20,0	9,5	8	14	12	GE-LLR-06-G 1/8"
LL	100	8	G 1/8"		9,0	8	14	14	GE-LLR-08-G 1/8"

Series	Pressure PN	Tube O.D. D1	Thread G	Approx. Dimensions					Order-Code Standard
				L1	L2	i	SW1	SW3	
L	315	6	G 1/8"	23,0	8,5	8	14	14	GE-LR-06-G 1/8"
L	315	6	G 1/4"	27,0	9,0	12	19	14	GE-LR-06-G 1/4"
L	315	6	G 3/8"	27,0	11,5	12	22	14	GE-LR-06-G 3/8"
L	315	6	G 1/2"	29,0	12,0	14	27	14	GE-LR-06-G 1/2"
L	315	8	G 1/8"	26,0	9,5	8	14	17	GE-LR-08-G 1/8"
L	315	8	G 1/4"	25,0	10,0	12	19	17	GE-LR-08-G 1/4"
L	315	8	G 3/8"	28,5	11,5	12	22	17	GE-LR-08-G 3/8"
L	315	8	G 1/2"	28,5	13,0	14	27	17	GE-LR-08-G 1/2"
L	315	10	G 1/8"	27,5	11,0	8	17	19	GE-LR-10-G 1/8"
L	315	10	G 1/4"	26,0	11,0	12	19	19	GE-LR-10-G 1/4"
L	315	10	G 3/8"	30,5	12,5	12	22	19	GE-LR-10-G 3/8"
L	315	10	G 1/2"	32,5	13,0	14	27	19	GE-LR-10-G 1/2"
L	315	10	G 3/4"			16	32	19	GE-LR-10-G 3/4"
L	315	12	G 1/8"	29,0	11,0	8	19	22	GE-LR-12-G 1/8"
L	315	12	G 1/4"	30,0	12,0	12	19	22	GE-LR-12-G 1/4"
L	315	12	G 3/8"	27,0	12,5	12	22	22	GE-LR-12-G 3/8"
L	315	12	G 1/2"	31,0	13,0	14	27	22	GE-LR-12-G 1/2"
L	315	12	G 3/4"	31,0	14,0	16	32	22	GE-LR-12-G 3/4"
L	315	15	G 1/4"	32,0	13,0	12	24	27	GE-LR-15-G 1/4"
L	315	15	G 3/8"	31,0	13,5	12	24	27	GE-LR-15-G 3/8"
L	315	15	G 1/2"	29,0	14,0	14	27	27	GE-LR-15-G 1/2"
L	315	15	G 3/4"	32,5	15,0	16	32	27	GE-LR-15-G 3/4"
L	315	15	G 1"			18	41	27	GE-LR-15-G 1"
L	315	18	G 3/8"	31,0	12,5	12	27	32	GE-LR-18-G 3/8"
L	315	18	G 1/2"	31,0	14,5	14	27	32	GE-LR-18-G 1/2"
L	315	18	G 3/4"	34,0	14,5	16	32	32	GE-LR-18-G 3/4"
L	315	18	G 1"		16,5	18	41	32	GE-LR-18-G 1"
L	160	22	G 3/8"	49,0	16,0	12	32	36	GE-LR-22-G 3/8"
L	160	22	G 1/2"	37,0	16,5	14	32	36	GE-LR-22-G 1/2"
L	160	22	G 3/4"	33,0	16,5	16	32	36	GE-LR-22-G 3/4"
L	160	22	G 1"	38,0	17,5	18	41	36	GE-LR-22-G 1"
L	160	22	G 1 1/4"			20	50	36	GE-LR-22-G 1 1/4"
L	160	28	G 1/2"		17,5	14	41	41	GE-LR-28-G 1/2"
L	160	28	G 3/4"	38,0	17,5	16	41	41	GE-LR-28-G 3/4"
L	160	28	G 1"	34,0	17,5	18	41	41	GE-LR-28-G 1"
L	160	28	G 1 1/4"		18,5	20	50	41	GE-LR-28-G 1 1/4"
L	160	28	G 1 1/2"	43,0	20,5	22	55	41	GE-LR-28-G 1 1/2"
L	160	35	G 3/4"	42,0	18,5	16	46	50	GE-LR-35-G 3/4"
L	160	35	G 1"	42,0	17,5	18	46	50	GE-LR-35-G 1"
L	160	35	G 1 1/4"	39,0	17,5	20	50	50	GE-LR-35-G 1 1/4"
L	160	35	G 1 1/2"	44,0	19,5	22	55	50	GE-LR-35-G 1 1/2"
L	160	42	G 1"	47,0	19,0	18	55	60	GE-LR-42-G 1"
L	160	42	G 1 1/4"	47,0	19,0	20	55	60	GE-LR-42-G 1 1/4"
L	160	42	G 1 1/2"	47,0	19,0	22	55	60	GE-LR-42-G 1 1/2"
L	160	42	G 2"			70	60	60	GE-LR-42-G 2"