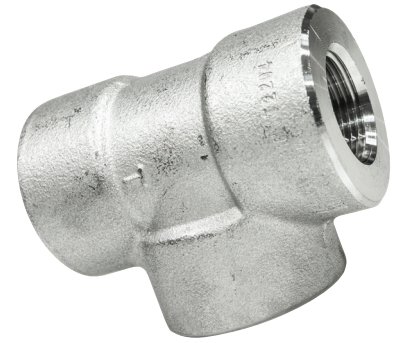


# Equal Tee

## Technical Data

- BSPT threaded to ISO 7-1
- Dimensions to ANSI B16.11/BS3799
- 3000 LB rating
- Sizes 1/4" to 2"
- 316L stainless steel
- Larger sizes are available



SIZE	PART No	A	B	C	Kg/100
1/4	1012-0057	25	25	3.5	19.3
3/8	1012-0058	29	33	3.5	37.8
1/2	1012-0059	33	38	4.0	57.1
3/4	1012-0060	38	46	4.5	85.5
1	1012-0061	44	56	5.0	142.0
1-1/4	1012-0062	51	62	5.5	171.4
1-1/2	1012-0063	60	75	5.5	325.8
2	1012-0064	64	84	7.0	344.4

