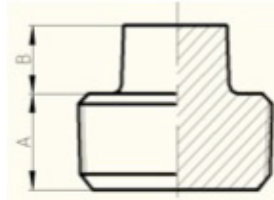
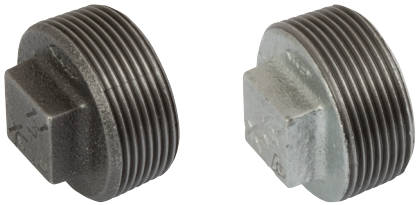


Malleable Iron Fittings

Plain Plug Hollow (291)

Plain Plug Solid (291S)



Size		Dimensions (mm)	
Inch	mm	A	B
1/2	15	14.2	9.7
3/4	20	16	11.2
1	25	19.1	12.7
1 1/4	32	20.3	14.2
1 1/2	40	21.1	15.8
2	50	22.4	17.3
2 1/2	65	26	13
3	80	28.7	20.3
4	100	30.0	21.8