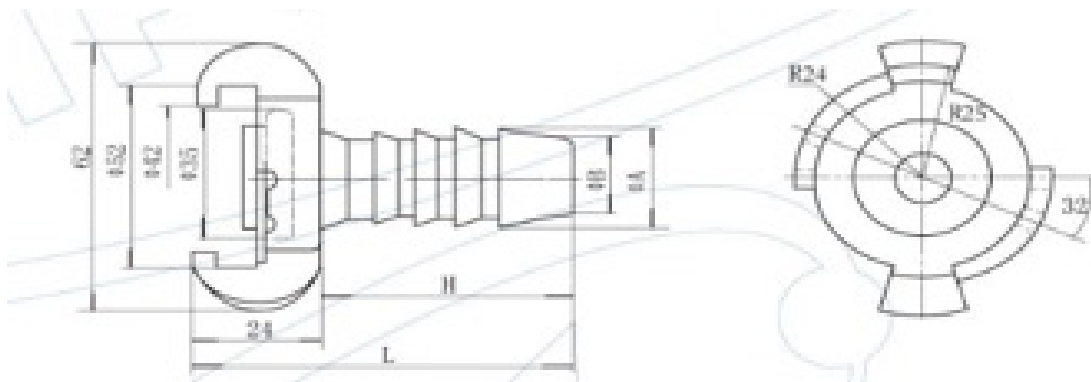


Quick Release Pneumatic Hose Couplings



European Execution Double Lock Claw Couplings

Steel , Hose Tail



- Robust couplings of malleable iron, zinc plated and yellow passivated (free of chrome VI)
- 100% couple test and sight control
- With oil-resistant rubber ring GOER, on request with steam-resistant rubber ring GDOR (up to 200°C) against charge
- Universal coupling, world-wide used system for compressed air in construction and industry

PART NO	SIZE	A	B	L	H
CCHT-38	3/8"	13	11	70	46
CCHT-12	1/2"	15	13	70	46
CCHT-34-SAFETY	3/4"	21	19	70	46
CCHT-34-SAFETY	3/4"	22	19	70	46
CCHT-1	1"	27.5	26	70	46

PART NO	HOSE I.D	MAX. WORKING PRESSURE	TEMP.	MATERIAL	SEAL	THREADS	MEDIUM	CLAW DISTANCE
CCHT-38	3/8 = 13MM	PN 10 BAR	-40°C-+95°C	Malleable Iron	NBR	ISO 229	Compressed Air	42mm
CCHT-12	1/2 = 15MM	PN 10 BAR	-40°C-+95°C	Malleable Iron	NBR	ISO 229	Compressed Air	42mm
CCHT-34-SAFETY	3/4 = 21MM	PN 10 BAR	-40°C-+95°C	Malleable Iron	NBR	ISO 229	Compressed Air	42mm
CCHT-34-SAFETY	3/4 = 21MM	PN 10 BAR	-40°C-+95°C	Malleable Iron	NBR	ISO 229	Compressed Air	42mm
CCHT-1	1 = 27.5MM	PN 10 BAR	-40°C-+95°C	Malleable Iron	NBR	ISO 229	Compressed Air	42mm