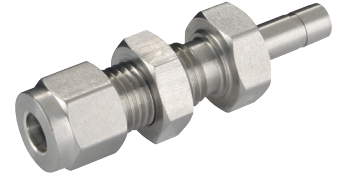
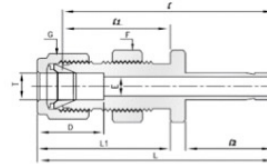


# 316 Stainless Steel Twin Ferrule Imperial Tube Fittings



## Bulkhead Reducers

### Tube x Tube



PART NO	T in	T1in	E Min	F	G	D	C	I	L
R-125-125	1/8	1/8	2.03	7/16	7/16	12.70	15.24	26.92	33.52
R-125-187	1/8	3/16	2.28	7/16	7/16	12.70	15.24	27.68	34.29
R-125-250	1/8	1/4	2.28	7/16	7/16	12.70	15.24	29.46	36.06
R-125-375	1/8	3/8	2.28	7/16	7/16	12.70	15.24	30.98	37.59
R-125-500	1/8	1/2	2.28	9/16	7/16	12.70	15.24	37.59	44.19
R-187-125	3/16	1/8	2.03	7/16	1/2	13.71	16.00	28.90	34.79
R-187-250	3/16	1/4	3.04	7/16	1/2	13.71	16.00	30.48	37.08
R-250-125	1/4	1/8	2.03	1/2	9/16	15.24	17.78	29.46	36.83
R-250-187	1/4	3/16	3.04	1/2	9/16	15.24	17.78	30.22	37.59
R-250-250	1/4	1/4	4.82	1/2	9/16	15.24	17.78	31.75	39.11
R-250-312	1/4	5/16	4.82	1/2	9/16	15.24	17.78	32.51	39.87
R-250-375	1/4	3/8	4.82	1/2	9/16	15.24	17.78	33.27	40.64
R-250-500	1/4	1/2	4.82	9/16	9/16	15.24	17.78	38.86	46.22
R-250-625	1/4	5/8	4.82	11/16	9/16	15.24	17.78	40.64	48.00
R-250-750	1/4	3/4	4.82	13/16	9/16	15.24	17.78	40.38	47.75
R-312-375	5/16	3/8	6.35	9/16	5/8	16.25	18.54	34.54	41.91
R-312-500	5/16	1/2	6.35	9/16	5/8	16.25	18.54	40.13	47.49
R-375-250	3/8	1/4	4.82	5/8	11/16	16.76	19.30	34.03	41.40
R-375-375	3/8	3/8	7.11	5/8	11/16	16.76	19.30	35.81	43.18
R-375-500	3/8	1/2	7.11	5/8	11/16	16.76	19.30	41.14	48.51
R-375-625	3/8	5/8	7.11	11/16	11/16	16.76	19.30	42.92	50.29
R-375-750	3/8	3/4	7.11	13/16	11/16	16.76	19.30	42.92	50.29
R-500-250	1/2	1/4	4.82	13/16	7/8	22.86	21.84	34.79	44.95
R-500-375	1/2	3/8	7.11	13/16	7/8	22.86	21.84	36.57	46.73
R-500-500	1/2	1/2	9.90	13/16	7/8	22.86	21.84	42.16	52.32
R-500-625	1/2	5/8	10.41	13/16	7/8	22.86	21.84	43.68	53.84
R-500-750	1/2	3/4	10.41	13/16	7/8	22.86	21.84	43.68	53.84
R-500-1000	1/2	1	10.41	1-1/16	7/8	22.86	21.84	50.03	60.19
R-625-750	5/8	3/4	12.70	15/16	1	24.38	21.84	44.45	54.61
R-625-875	5/8	7/8	12.70	15/16	1	24.38	21.84	45.97	56.13
R-625-1000	5/8	1	12.70	1-1/16	1	24.38	21.84	50.80	60.96
R-750-500	3/4	1/2	9.90	1-1/16	1-1/8	24.38	21.84	44.45	54.61
R-750-1000	3/4	1	15.74	1-1/16	1-1/8	24.38	21.84	52.32	62.48