

# Instantaneous Fire Hose Couplings



## Adaptors - Aluminium Unpolished

Products available in:

**Light Alloy** - Natural Finish

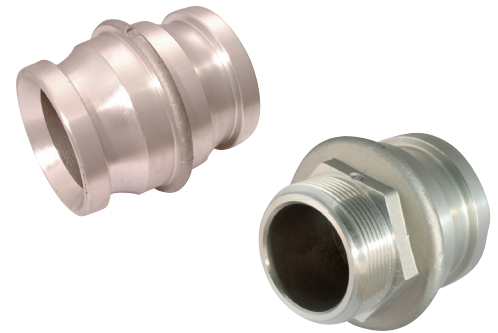
**Gunmetal** - Natural Finish

**Polished** and **Anodized** surface finishes are available for **Light Alloy** when specified

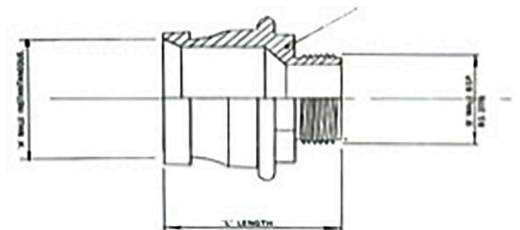
**Polished** and **Chrome plated** surface finish is available for **gunmetal** when specified

**Maximum Working Pressure:** 16 bar

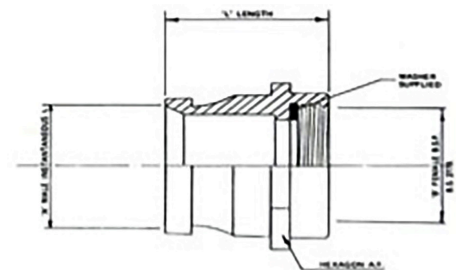
**Maximum Test Pressure:** 24 bar



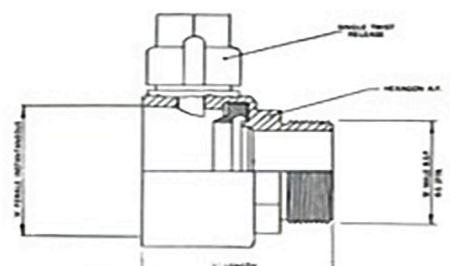
Part Number	Size A	Male BSP Size B	Length
FHAMIM212212	2.1/2"	2.1/2"	3.1/4"
FHAMIMBSP2122	2.1/2"	2"	3.1/4"
FHAMIMBSP212212	2.1/2"	2.1/2"	3.1/4"



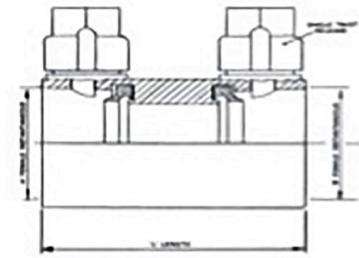
Part Number	Size A	Female BSP Size B	Length
FHAMIFBSP2122	2.1/2"	2"	2.1/2"
FHAMIFBSP212212	2.1/2"	2.1/2"	2.7/8"



Part Number	Size A	Female BSP Size B	Length
FHAFIFBSP2122	2.1/2"	2"	3.1/4"
FHAFIFBSP212212	2.1/2"	2.1/2"	3.1/4"



Part Number	Size A	Male BSP Size B	Length
FHAMIM212212	2.1/2"	2.1/2"	3.1/4"
FHAMIMBSP2122	2.1/2"	2"	3.1/4"
FHAMIMBSP212212	2.1/2"	2.1/2"	3.1/4"



Part Number	Size A	Male BSP Size B	Length
FHAMIM212212	2.1/2"	2.1/2"	3.1/4"
FHAMIMBSP2122	2.1/2"	2"	3.1/4"
FHAMIMBSP212212	2.1/2"	2.1/2"	3.1/4"

