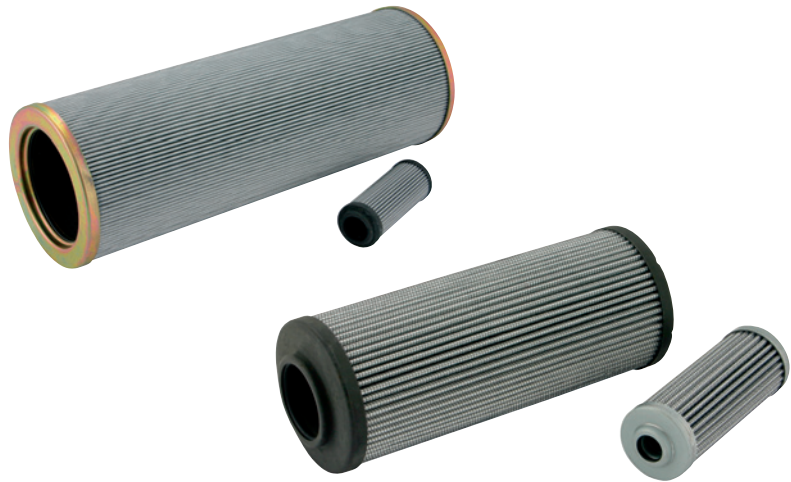


Replacement Elements



Hydraulic System Components Cleanliness Levels

System Component	Typical Cleanliness Specification									
	-	-	●	●	●	-	-	-	-	-
Servo Valve	-	-	●	●	●	-	-	-	-	-
Proportional Valve	-	-	-	●	●	●	-	-	-	-
Variable Pump	-	-	-	-	●	●	●	-	-	-
Cartridge Valve	-	-	-	-	-	●	●	●	-	-
Fixed Piston Pump	-	-	-	-	-	●	●	●	-	-
Vane Pump	-	-	-	-	-	-	●	●	●	●
Pressure/Flow Control Valve	-	-	-	-	-	-	●	●	●	●
Solenoid Valve	-	-	-	-	-	-	●	●	●	●
ISO Cleanliness	12/10/7	13/11/8	14/12/9	15/13/10	16/14/11	17/15/12	18/16/13	19/17/14	20/18/15	
Nas Cleanliness	1	2	3	4	5	6	7	8	9	
Recommended Micron Size Absolute ($\beta_{x \geq 1000}$)	3 micron	3 micron	3 micron	3 micron	6 micron	6 micron	10 micron	10 micron	>10	

P Series Elements:

e.g. P10 – Nominal cellulose impregnated paper media – 50% efficient.

A Series Elements:

e.g. A03 A06 A10 – Absolute inorganic microfibre filtration media – 99.9% efficient.

ISO 2941 Verification of collapse/burst resistance.

ISO 2942 Verification of fabrication integrity & determination of the first bubble point.

ISO 2943 Verification of material compatibility with fluids.

ISO 3723 Method for end load test.

ISO 3724 Verification of flow fatigue characteristics.

ISO 3968 Evaluation of pressure drop versus flow characteristics

ISO 4572 Multi-pass method for evaluating filtration performance.