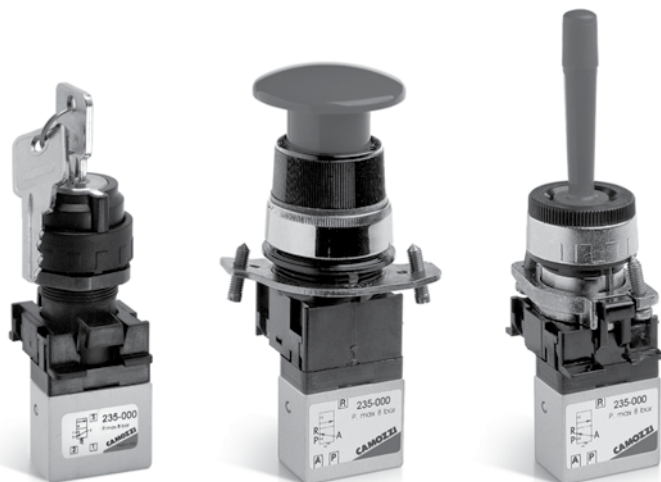


Manually operated console minivalves Series 2

3/2 and 5/3-way C.C. C.O. C.P.
Ports M5, Cartridge Ø 4



This series of miniature valves has been specially designed to satisfy all the application requirements of the controls industry with particular attention paid to the operating characteristics required from these components:

- Short operational stroke
- Small dimensions

GENERAL DATA

Valve group	3/2 way/pos.
Construction	poppet-type (closed centres)
Materials	aluminium body, OT58 (brass) plunger, NBR seals
Mounting	panel
Ports	M5 or cartridge dia. 4
Ambient temperature	0°C + 60°C
Medium temperature	0°C + 50°C
Operating pressure	see models

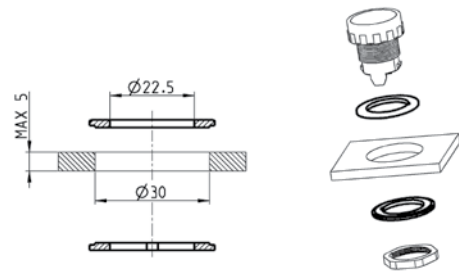
CODING EXAMPLE

2	3	4	-	97	5
---	---	---	---	----	---

2	SERIES
3	FUNCTION: 3 = 3/2 way N.C. 4 = 3/2 way N.O. 8 = 5/3 way C.A.
4	PORTS: 4 = cartridge ø 4 5 = M5
97	MODE OF OPERATION: 87 = 3 position selector 89 = push button 97 = palm switch 90 = joystick 99 = 2 position selector 92 = pedal 904 = key
5	RESETTING: 5 = spring return 0 = stable 2 = latching-twist to release 54 = joystick

Adaptor

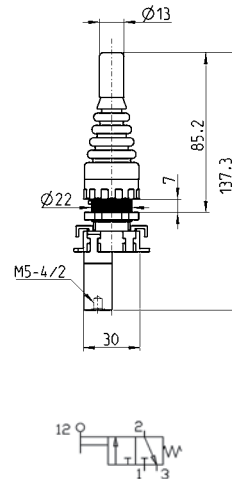
Panel hole adaptor Ø30
 Supplied with:
 2x reduction rings



Mod.
200-2230

Minivalves

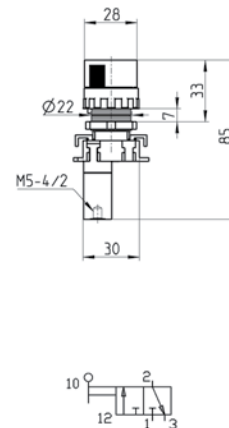
Operating pressure = 2 ÷ 8 bar
 Flow rate = 60 NI/min.



Mod.
234-905
235-905

Minivalves

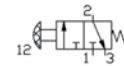
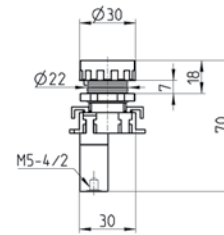
Operating pressure = 2 ÷ 8 bar
 Flow rate = 60 NI/min.



Mod.
234-990
235-990

Minivalves

Operating pressure = 2 ÷ 8 bar
 Flow rate = 60 NI/min.
 Actuating force at 6 bar = 7 N



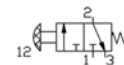
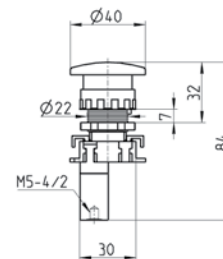
Mod.

234-895

235-895

Minivalves

Operating pressure = 2 ÷ 8 bar
 Flow rate = 60 NI/min.
 Actuating force at 6 bar = 7 N



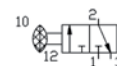
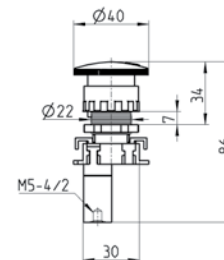
Mod.

234-975

235-975

Minivalves

Operating pressure = 2 ÷ 8 bar
 Flow rate = 60 NI/min.
 Actuating force at 6 bar = 7 N



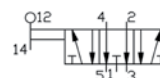
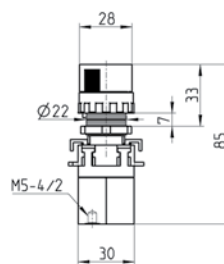
Mod.

234-972

235-972

Minivalves

Operating pressure = 2 ÷ 8 bar
Flow rate = 60 NI/min.



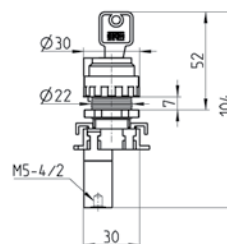
Mod.

284-870

285-870

Minivalves

Operating pressure = 2 ÷ 8 bar
Flow rate = 60 NI/min.



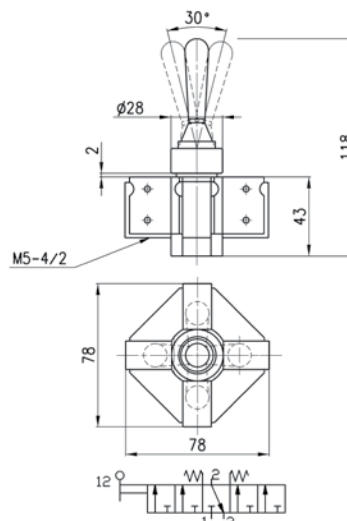
Mod.

234-904

235-904

Joystick valves

Minimum pressure = 2 bar



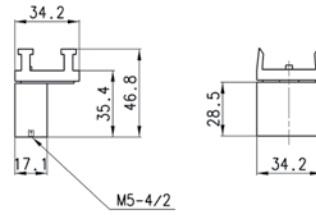
Mod.

234-9054

235-9054

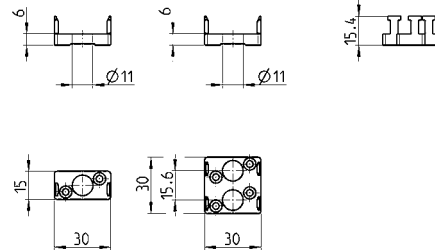
Minivalves

Operating pressure = 2 ÷ 8 bar
Flow rate = 60 NI/min.



Mod.
234-000
235-000

End cover



Mod.
210-000
220-000