

CartReg 1/4"

Mini Size – Maxi Benefits

CUBEAIR®

– Ready to install! – Inline pre-set pressure regulator for air blow guns and pneumatic tools –



Protects personnel, machinery and plant !

Preset pressure regulators are an economical means to maintain ideal pressures.

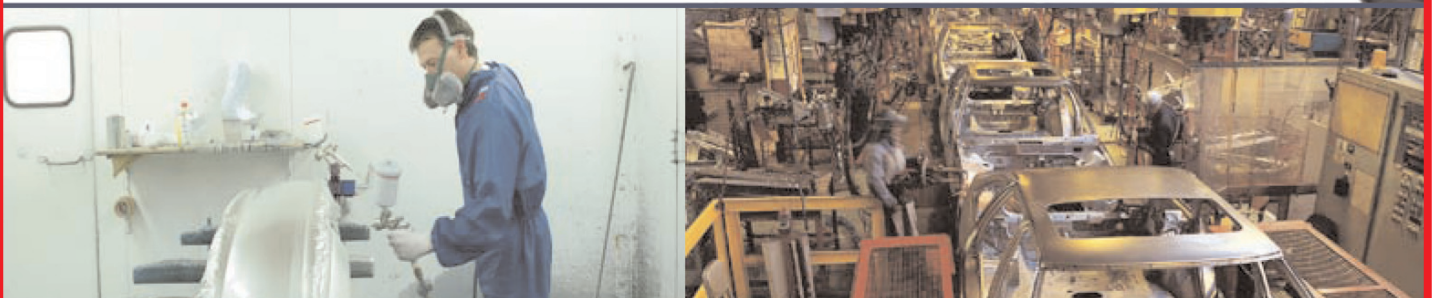
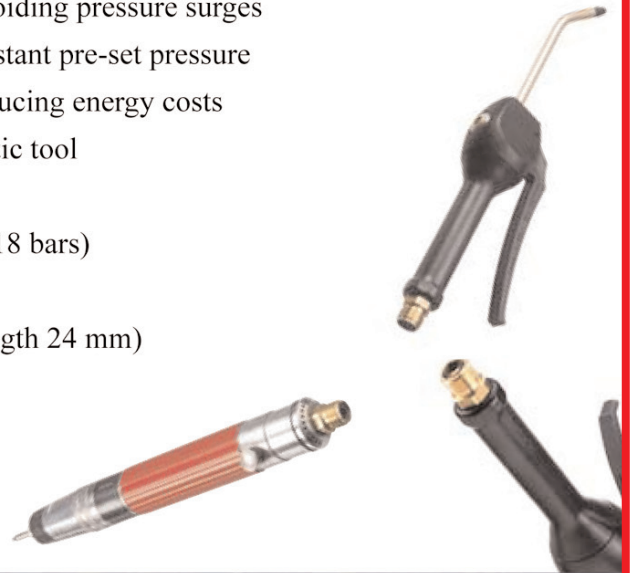
The CartReg miniature inline pre-set pressure regulator is designed to meet OSHA (Occupational Safety & Health Administration, USA) and other safety agency requirements for 30 PSI maximum pressure for blow guns. The CartReg can easily be threaded into any 1/4" air blow gun or pneumatic tool.

Highlights:

- ✓ Safety: Protects personnel, machinery and plant by avoiding pressure surges
- ✓ Ensures optimal air tool efficiency by supplying a constant pre-set pressure
- ✓ Limits excessive compressed air consumption → Reducing energy costs
- ✓ Easy assembly: can be integrated into any 1/4" pneumatic tool
- ✓ Tamper-proof
- ✓ High-pressure performance (P1 = inlet pressure up to 18 bars)
- ✓ High flow performance (up to 500 L/min)
- ✓ Lightweight (14 g) and compact (Hexagon 14 mm, length 24 mm)
- ✓ Competitively priced

Applications:

Air blow guns, pneumatic tools and for example “pick-and-place” units and automatic assembly lines.



CartReg: Keep it simple !

CartReg 1/4"

The CartReg miniature inline pre-set pressure regulator is designed to meet OSHA (Occupational Safety & Health Administration, USA) and other safety agency requirements for 30 PSI maximum pressure for blow guns. The CartReg can easily be threaded into any 1/4" air blow gun and pneumatic tool and is an economical means to maintain ideal pressures.



CARTREG

Pre-set:

2 Bar / 29 PSI
4 Bar / 58 PSI
6 Bar / 87 PSI

Ordering code: 233G02



Thread Connections: 1/4" BSP Male / Male

Point 1: Pre-set pressure regulator

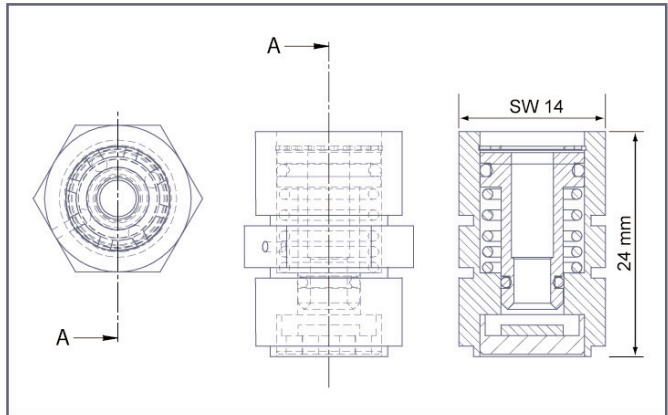
20 2 Bar / 29 PSI
40 4 Bar / 58 PSI
60 6 Bar / 87 PSI

Technical data:

Medium: Compressed atmospheric air
Max. pressure: 18 Bars
Flow rate: 0 – 500 L/min
Temperature: -20 – +60°C
Weight: 14 g

Material:

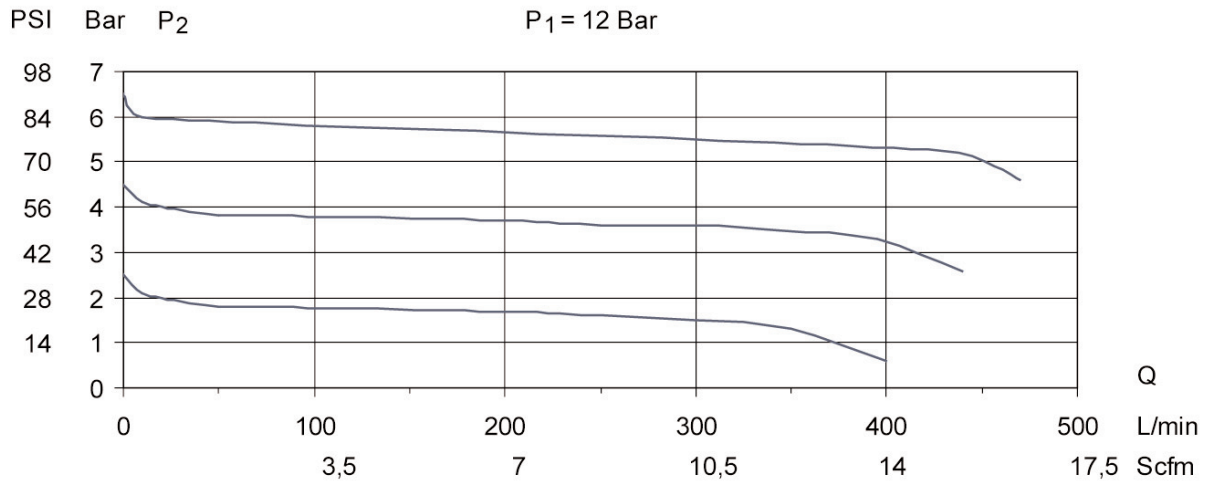
Housing: Brass
Piston: Brass
Spring: Stainless steel
O-Ring: NBR rubber



Flow characteristic for CartReg

Typical values

P₁ = 12 Bar



Professional partner