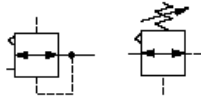


Air line equipment

Ported pilot operated pressure regulators

11-808, R18, 11400, 11-204

G³/₄ to G2



Can be installed at any point in the compressed air system without regard to accessibility – pilot regulator can be installed in the most convenient location

Accurate pressure regulation over a wide range of flows

Can be used with conventional or feedback pilot regulator

Feedback pilot regulator senses downstream pressure and automatically adjusts pilot operated regulator outlet pressure

See also page 478 for special purpose R24 pilot operated regulators



Technical data

- Medium:
- Compressed air only
- Maximum inlet pressure:
 - 20 bar (11-808, 11-204)
 - 25 bar (11400)
 - 31 bar (R18)
- Gauge ports:
 - Rc1/8 (11-808)
 - G1/8 (11400)
 - G1/4 (R18)
- Pilot port:
 - Rc1/4 (11-808)
 - G1/4 (R18)
- Exhaust ports:
 - G3/4" (R18)
- Ambient temperature:
 - 20°C to +80°C
 - Consult our Technical Service for use below +2°C

Materials

- 11-808:
 - Body: zinc alloy
 - Bonnet: aluminium alloy
 - Elastomers: nitrile
- 11400:
 - Body & bonnet: zinc alloy
 - Adjusting knob: acetal resin
 - Elastomers: nitrile
- R18:
 - Body & bonnet: aluminium alloy
 - Elastomers: nitrile
- 11-204:
 - Body & bonnet: zinc alloy
 - Adjusting knob: acetal resin
 - Elastomers: synthetic rubber

Constant Bleed 11-808
 All pilots and pilot operated regulators have a constant bleed feature to give maximum performance, this gives a continual escape of air in to the atmosphere.

Pilot operated regulators

Port size	Flow (dm ³ /s)	Range (bar) *	Operation	kg	Model	Service kit
G3/4	180#	0,16 ... 17	Relieving	2,20	11-808-960	11-908-100
G1	180#	0,16 ... 17	Relieving	2,36	11-808-980	11-908-100
G1½	950‡	0,16 ... 17	Relieving	3,20	R18-B00-RNXD	R18-100R
G1½	950‡	0,16 ... 17	Non-relieving	3,16	R18-B00-MNXD	R18-100N
G2	950‡	0,16 ... 17	Relieving	3,08	R18-C00-RNXD	R18-100R
G2	950‡	0,16 ... 17	Non-relieving	3,01	R18-C00-MNXD	R18-100N

* Can be adjusted to zero bar outlet pressure, and, generally, to pressures in excess of those specified.
 # Maximum flow (feedback pilot) with 8 bar inlet pressure, 6,3 bar outlet pressure and zero pressure droop.
 ‡ Maximum flow (feedback pilot) with 7 bar inlet pressure, 6,3 bar outlet pressure and a droop of 1 bar from set.

Feedback pilot regulators

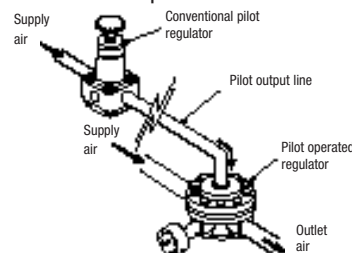
Port size	Range (bar) *	Operation	kg	Model	Service kit
G1/4	0,16 ... 7	Relieving	1,20	11-204-004	11-204-100
G1/4	4 ... 17	Relieving	1,30	11-204-006	11-204-100

Feedback pilot regulators are designed solely for use with pilot operated regulators and must not be used in any other application.
 For conventional pilot regulators see page 412 (R38 & 11400 Series)

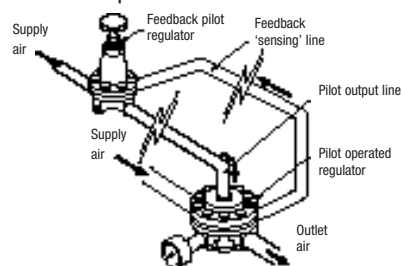
Conventional pilot regulators

Port size	Accuracy (bar)	Range (bar)	Operation	kg	Model	Service kit
G1/4	0,07	0,06 ... 2	Relieving only	0,90	11400-2G/PC100	11400-100
G1/4	0,15	0,06 ... 4	Relieving only	0,94	11400-2G/PE100	11400-100
G1/4	0,25	0,16 ... 7	Relieving only	1,00	11400-2G/PG100	11400-100
G1/4	1,00	7 ... 20	Relieving only	1,05	20AL-X2G/PK100	11400-100

Conventional pilot



Feedback pilot



Feedback pilot regulators give more sensitive control and quicker reaction to downstream pressure changes. Feedback 'sensing' line to be kept to minimum length (<200mm).

Accessories

Series	Bracket kit	Gauge 0 ... 25 bar‡	Silencer
11-808	18-001-027	18-013-014	
R18	*	18-013-014	MB006B
11-204	18-001-005		

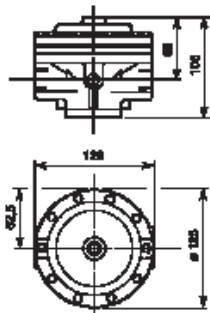
‡ Pressure gauges should always be connected to the main regulator, not the pilot regulator. Other pressure ranges available – see page 486
 * Use pipe supports

Ported pilot operated pressure regulators

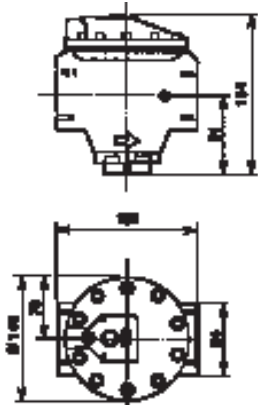
11-808, R18, 11400, 11-204

G $\frac{3}{4}$ to G2

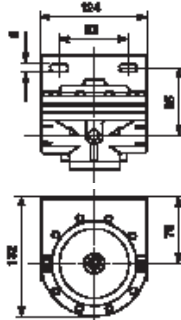
11-808



R18

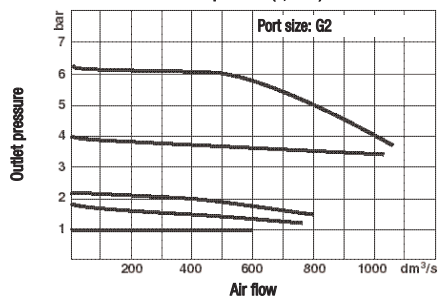


Bracket mounting (11-808)

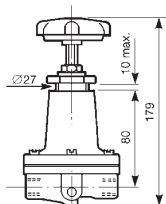


Flow characteristics

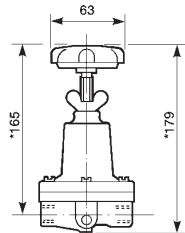
R18, with conventional pilot
Inlet pressure (6,9 bar)



11-204

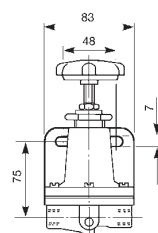


11400, 20AL-X

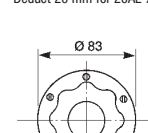
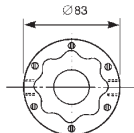
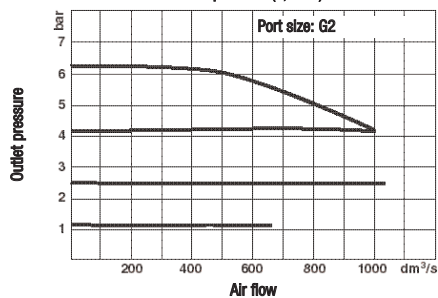


*Deduct 20 mm for 20AL-X Series

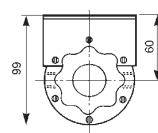
Bracket mounting (11-204)



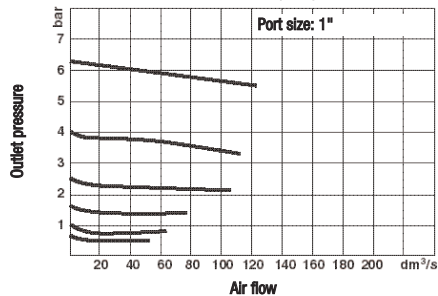
R18, with 11-204 feedback pilot
Inlet pressure (6,9 bar)



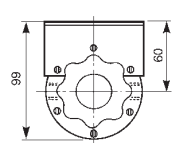
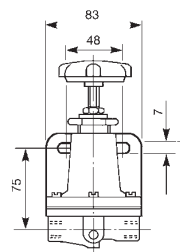
Weight: 1,00 kg (11400)
1,05kg (20AL-X)



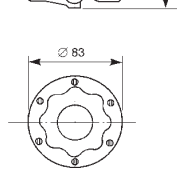
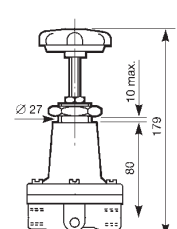
11-808 with conventional pilot
Inlet pressure (8 bar)



Bracket mounting (11400)
Bracket mounting (20AL-X)



Panel mounting (11400)
Panel mounting (20AL-X)



11-808, with 11-204 feedback pilot
Inlet pressure (8 bar)

