



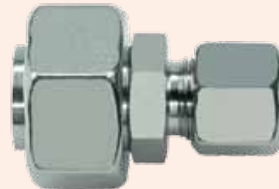
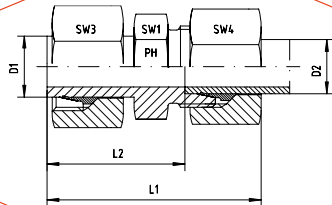
KONUS-REDUZIERANSCHLÜSSE

TUBE END REDUCERS



PRODUKTE / PRODUCTS

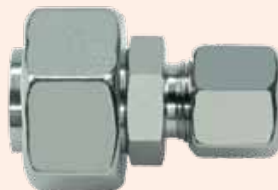
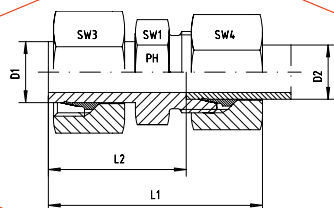
ERLÄUTERUNG / EXPLANATION



Anschluss D1 ist vormontiert. Die Fertigmontage erfolgt im Stutzen mit ca. 1/2 Umdrehung der Überwurfmutter über den Punkt des deutlich spürbaren Kraftanstieges.

Port D1 is pre-assembled. Final assembly in appropriate body with approx. 1/2 turn beyond the point of clearly perceptible resistance.

| Reihe Series | Druck Pressure PN | Rohr A.D. Tube O.D. D1 | Rohr A.D. Tube O.D. D2 | Ca. Maße Approx. Dimensions | | | | | Bestellzeichen Order-Code Standard |
|-----------------|-------------------------|------------------------------|------------------------------|--------------------------------|------|-----|-----|-----|--|
| | | | | L1 | L2 | SW1 | SW3 | SW4 | |
| L | 315 | 8 | 6 | 43,5 | 25,5 | 12 | 17 | 14 | KOR-8L-6L |
| L | 315 | 10 | 6 | 44,0 | 29,0 | 12 | 19 | 14 | KOR-10L-6L |
| L | 315 | 10 | 8 | 44,0 | 29,0 | 14 | 19 | 17 | KOR-10L-8L |
| L | 315 | 12 | 6 | 44,0 | 29,0 | 14 | 22 | 14 | KOR-12L-6L |
| L | 315 | 12 | 8 | 44,0 | 29,0 | 14 | 22 | 17 | KOR-12L-8L |
| L | 315 | 12 | 10 | 45,0 | 30,0 | 17 | 22 | 19 | KOR-12L-10L |
| L | 315 | 15 | 6 | 45,5 | 30,5 | 17 | 27 | 14 | KOR-15L-6L |
| L | 315 | 15 | 8 | 45,5 | 30,5 | 17 | 27 | 17 | KOR-15L-8L |
| L | 315 | 15 | 10 | 46,5 | 31,5 | 17 | 27 | 19 | KOR-15L-10L |
| L | 315 | 15 | 12 | 46,5 | 31,5 | 19 | 27 | 22 | KOR-15L-12L |
| L | 315 | 18 | 6 | 47,5 | 32,5 | 19 | 32 | 14 | KOR-18L-6L |
| L | 315 | 18 | 8 | 47,5 | 32,5 | 19 | 32 | 17 | KOR-18L-8L |
| L | 315 | 18 | 10 | 48,0 | 33,0 | 19 | 32 | 19 | KOR-18L-10L |
| L | 315 | 18 | 12 | 48,0 | 33,0 | 19 | 32 | 22 | KOR-18L-12L |
| L | 315 | 18 | 15 | 49,0 | 34,0 | 22 | 32 | 27 | KOR-18L-15L |
| L | 160 | 22 | 6 | 50,0 | 35,0 | 24 | 36 | 14 | KOR-22L-6L |
| L | 160 | 22 | 8 | 50,0 | 35,0 | 24 | 36 | 17 | KOR-22L-8L |
| L | 160 | 22 | 10 | 51,0 | 36,0 | 24 | 36 | 19 | KOR-22L-10L |
| L | 160 | 22 | 12 | 51,0 | 36,0 | 24 | 36 | 22 | KOR-22L-12L |
| L | 160 | 22 | 15 | 52,0 | 37,0 | 24 | 36 | 27 | KOR-22L-15L |
| L | 160 | 22 | 18 | 53,0 | 36,5 | 27 | 36 | 32 | KOR-22L-18L |
| L | 160 | 28 | 6 | 50,0 | 35,0 | 30 | 41 | 14 | KOR-28L-6L |
| L | 160 | 28 | 8 | 50,0 | 35,0 | 30 | 41 | 17 | KOR-28L-8L |
| L | 160 | 28 | 10 | 51,0 | 36,0 | 30 | 41 | 19 | KOR-28L-10L |
| L | 160 | 28 | 12 | 51,0 | 36,0 | 30 | 41 | 22 | KOR-28L-12L |
| L | 160 | 28 | 15 | 52,0 | 37,0 | 30 | 41 | 27 | KOR-28L-15L |
| L | 160 | 28 | 18 | 54,0 | 37,5 | 30 | 41 | 32 | KOR-28L-18L |
| L | 160 | 28 | 22 | 55,5 | 39,0 | 30 | 41 | 36 | KOR-28L-22L |
| L | 160 | 35 | 6 | 58,0 | 43,0 | 36 | 50 | 14 | KOR-35L-6L |
| L | 160 | 35 | 8 | 58,0 | 43,0 | 36 | 50 | 17 | KOR-35L-8L |
| L | 160 | 35 | 10 | 59,0 | 44,0 | 36 | 50 | 19 | KOR-35L-10L |
| L | 160 | 35 | 12 | 59,0 | 44,0 | 36 | 50 | 22 | KOR-35L-12L |
| L | 160 | 35 | 15 | 60,0 | 45,0 | 36 | 50 | 27 | KOR-35L-15L |
| L | 160 | 35 | 18 | 61,0 | 44,5 | 36 | 50 | 32 | KOR-35L-18L |
| L | 160 | 35 | 22 | 63,0 | 46,5 | 36 | 50 | 36 | KOR-35L-22L |
| L | 160 | 35 | 28 | 63,0 | 46,5 | 41 | 50 | 41 | KOR-35L-28L |
| L | 160 | 42 | 6 | 59,0 | 44,0 | 36 | 60 | 14 | KOR-42L-6L |
| L | 160 | 42 | 8 | 59,0 | 44,0 | 46 | 60 | 17 | KOR-42L-8L |
| L | 160 | 42 | 10 | 60,0 | 45,0 | 46 | 60 | 19 | KOR-42L-10L |
| L | 160 | 42 | 12 | 60,0 | 45,0 | 46 | 60 | 22 | KOR-42L-12L |
| L | 160 | 42 | 15 | 61,0 | 46,0 | 46 | 60 | 27 | KOR-42L-15L |
| L | 160 | 42 | 18 | 59,0 | 44,0 | 46 | 60 | 32 | KOR-42L-18L |
| L | 160 | 42 | 22 | 63,0 | 46,5 | 46 | 60 | 36 | KOR-42L-22L |
| L | 160 | 42 | 28 | 64,0 | 47,5 | 46 | 60 | 41 | KOR-42L-28L |
| L | 160 | 42 | 35 | 69,0 | 47,5 | 46 | 60 | 50 | KOR-42L-35L |



Anschluss D1 ist vormontiert. Die Fertigmontage erfolgt im Stutzen mit ca. 1/2 Umdrehung der Überwurfmutter über den Punkt des deutlich spürbaren Kraftanstieges.

Port D1 is pre-assembled. Final assembly in appropriate body with approx. 1/2 turn beyond the point of clearly perceptible resistance.

| Reihe Series | Druck Pressure PN | Rohr A.D. Tube O.D. D1 | Rohr A.D. Tube O.D. D2 | Ca. Maße Approx. Dimensions | | | | | Bestellzeichen Order-Code Standard |
|-----------------|-------------------------|------------------------------|------------------------------|--------------------------------|------|-----|-----|-----|--|
| | | | | L1 | L2 | SW1 | SW3 | SW4 | |
| S | 630 | 8 | 6 | 47,0 | 32,0 | 14 | 19 | 17 | KOR-8S-6S |
| S | 630 | 10 | 6 | 48,0 | 33,0 | 14 | 22 | 17 | KOR-10S-6S |
| S | 630 | 10 | 8 | 48,0 | 33,0 | 17 | 22 | 19 | KOR-10S-8S |
| S | 630 | 12 | 6 | 50,0 | 35,0 | 14 | 24 | 17 | KOR-12S-6S |
| S | 630 | 12 | 8 | 50,0 | 35,0 | 17 | 24 | 19 | KOR-12S-8S |
| S | 630 | 12 | 10 | 51,0 | 34,5 | 19 | 24 | 22 | KOR-12S-10S |
| S | 630 | 14 | 6 | 50,0 | 35,0 | 17 | 27 | 17 | KOR-14S-6S |
| S | 630 | 14 | 8 | 50,0 | 35,0 | 17 | 27 | 19 | KOR-14S-8S |
| S | 630 | 14 | 10 | 51,0 | 34,5 | 19 | 27 | 22 | KOR-14S-10S |
| S | 630 | 14 | 12 | 51,0 | 34,5 | 22 | 27 | 24 | KOR-14S-12S |
| S | 400 | 16 | 6 | 54,0 | 39,0 | 17 | 30 | 17 | KOR-16S-6S |
| S | 400 | 16 | 8 | 54,0 | 39,0 | 17 | 30 | 19 | KOR-16S-8S |
| S | 400 | 16 | 10 | 55,0 | 38,5 | 19 | 30 | 22 | KOR-16S-10S |
| S | 400 | 16 | 12 | 55,0 | 38,5 | 22 | 30 | 24 | KOR-16S-12S |
| S | 400 | 16 | 14 | 58,0 | 40,0 | 22 | 30 | 27 | KOR-16S-14S |
| S | 400 | 20 | 6 | 58,5 | 43,5 | 22 | 36 | 17 | KOR-20S-6S |
| S | 400 | 20 | 8 | 58,5 | 43,5 | 22 | 36 | 19 | KOR-20S-8S |
| S | 400 | 20 | 10 | 59,5 | 43,0 | 22 | 36 | 22 | KOR-20S-10S |
| S | 400 | 20 | 12 | 59,5 | 43,0 | 22 | 36 | 24 | KOR-20S-12S |
| S | 400 | 20 | 14 | 60,5 | 42,5 | 22 | 36 | 27 | KOR-20S-14S |
| S | 400 | 20 | 16 | 63,0 | 44,5 | 24 | 36 | 30 | KOR-20S-16S |
| S | 400 | 25 | 6 | 59,0 | 44,0 | 27 | 46 | 17 | KOR-25S-6S |
| S | 400 | 25 | 8 | 59,0 | 44,0 | 27 | 46 | 19 | KOR-25S-8S |
| S | 400 | 25 | 10 | 61,0 | 44,5 | 27 | 46 | 22 | KOR-25S-10S |
| S | 400 | 25 | 12 | 63,0 | 46,5 | 27 | 46 | 24 | KOR-25S-12S |
| S | 400 | 25 | 14 | 64,0 | 46,0 | 27 | 46 | 27 | KOR-25S-14S |
| S | 400 | 25 | 16 | 67,0 | 48,5 | 27 | 46 | 30 | KOR-25S-16S |
| S | 400 | 25 | 20 | 70,0 | 48,5 | 30 | 46 | 36 | KOR-25S-20S |
| S | 400 | 30 | 6 | 69,0 | 54,0 | 32 | 50 | 17 | KOR-30S-6S |
| S | 400 | 30 | 8 | 69,0 | 54,0 | 32 | 50 | 19 | KOR-30S-8S |
| S | 400 | 30 | 10 | 70,0 | 53,5 | 32 | 50 | 22 | KOR-30S-10S |
| S | 400 | 30 | 12 | 70,0 | 53,5 | 32 | 50 | 24 | KOR-30S-12S |
| S | 400 | 30 | 14 | 71,0 | 53,0 | 32 | 50 | 27 | KOR-30S-14S |
| S | 400 | 30 | 16 | 73,0 | 54,5 | 32 | 50 | 30 | KOR-30S-16S |
| S | 400 | 30 | 20 | 76,0 | 54,5 | 32 | 50 | 36 | KOR-30S-20S |
| S | 400 | 30 | 25 | 81,5 | 57,5 | 36 | 50 | 46 | KOR-30S-25S |
| S | 250 | 38 | 6 | 70,0 | 55,0 | 41 | 60 | 17 | KOR-38S-6S |
| S | 250 | 38 | 8 | 70,0 | 55,0 | 41 | 60 | 19 | KOR-38S-8S |
| S | 250 | 38 | 10 | 71,0 | 54,5 | 41 | 60 | 22 | KOR-38S-10S |
| S | 250 | 38 | 12 | 71,0 | 54,5 | 41 | 60 | 24 | KOR-38S-12S |
| S | 250 | 38 | 14 | 74,0 | 56,0 | 41 | 60 | 27 | KOR-38S-14S |
| S | 250 | 38 | 16 | 74,0 | 55,5 | 41 | 60 | 30 | KOR-38S-16S |
| S | 250 | 38 | 20 | 79,0 | 57,5 | 41 | 60 | 36 | KOR-38S-20S |
| S | 250 | 38 | 25 | 84,0 | 60,0 | 41 | 60 | 46 | KOR-38S-25S |
| S | 250 | 38 | 30 | 87,0 | 60,5 | 46 | 60 | 50 | KOR-38S-30S |