

TL-1003 3T & TL-1005 5T

FEATURES

- Welded base and cylinders to assure strength and eliminated leaks
- Chromed pump piston and ram for added rust resistance
- Foot pedal brings saddle up to load quickly
- Meets ANSI/ASME PALD standards & CE/GS

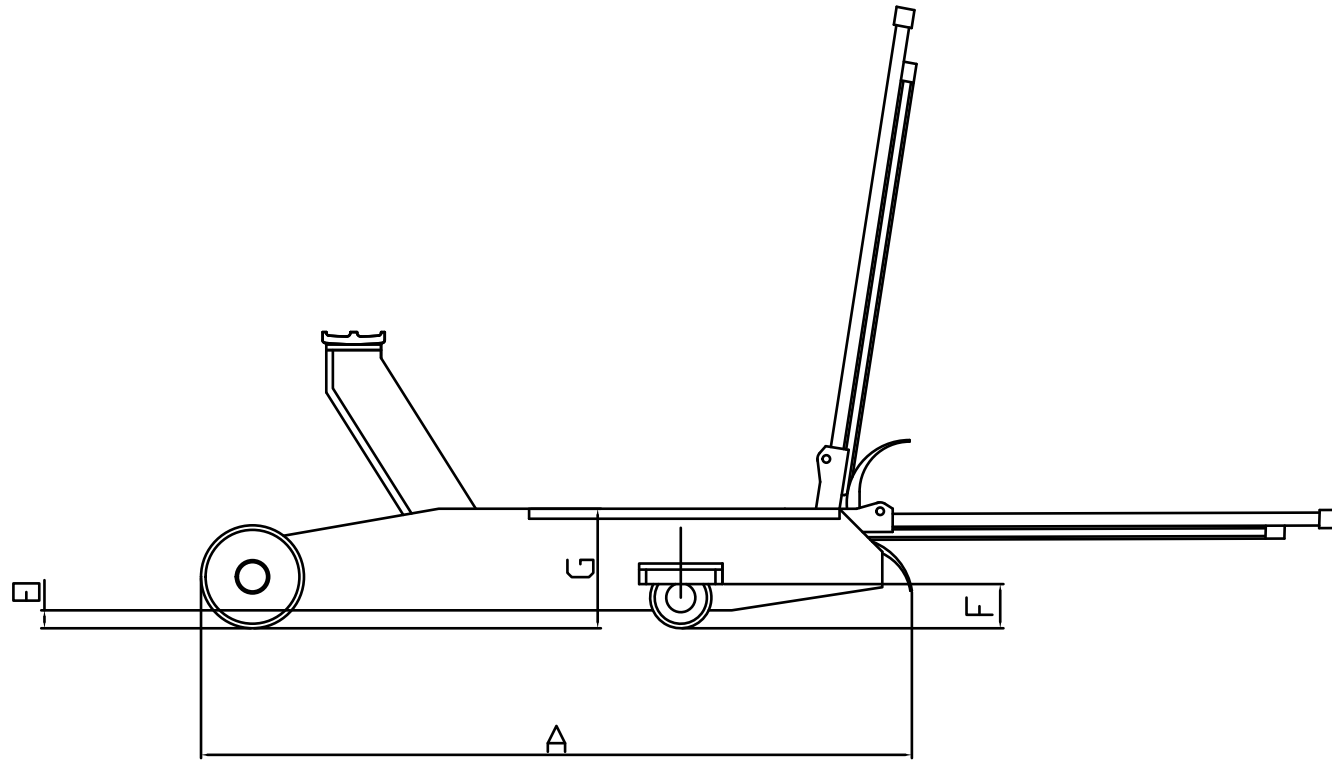
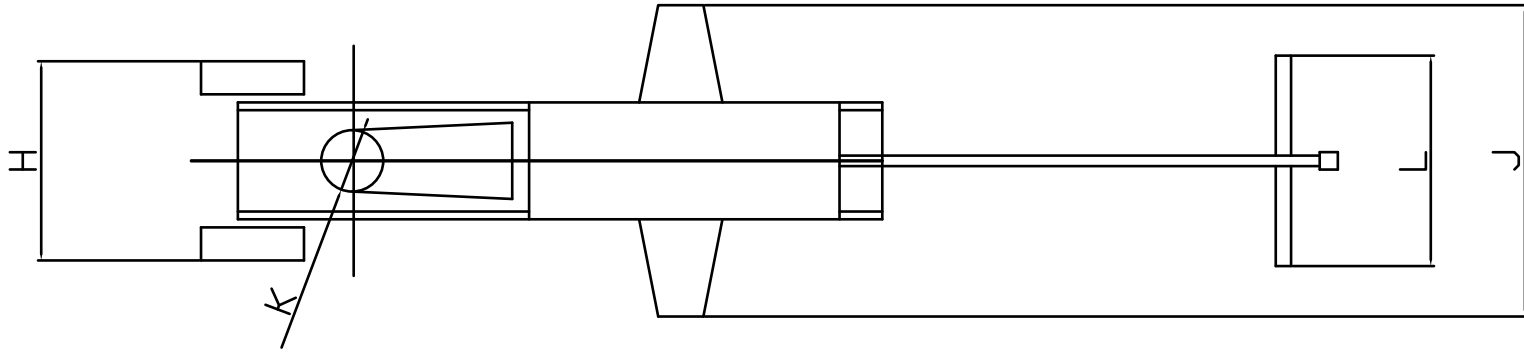


SPECIFICATIONS

Model	Capacity	Min. Height	Max. Height	Net Weight
TL-1003	3 Ton	130mm(5.1")	600mm(23.6")	65Kg(143Lbs)

DIMENSIONS

Model	A mm(in.)	E mm(in.)	F mm(in.)	G mm(in.)	H mm(in.)	J mm(in.)	L mm(in.)	K mm(in.)	Handle Length mm(in.)	Front Wheel Dia mm(in.)	Rear Caster Dia mm(in.)
TL-1003	1244(49.0)	19(0.7)	19(0.7)	170(6.7)	237(9.3)	323(12.7)	245(9.6)	125(4.9)	1155(45.5)	100(3.9)	60(2.4)
TL-1005	1505(59.3)	31(1.2)	31(1.2)	200(7.9)	290(11.4)	364(14.3)	245(9.6)	130(5.1)	1155(45.5)	111(4.4)	70(2.8)



Model	A mm(in)	E mm(in)	F mm(in)	G mm(in)	H mm(in)	J mm(in)	L mm(in)	K mm(in)	Handle Length mm(in)	Front Wheel Ø mm(in)	Rear Castor Ø mm(in)
TL-1003	1244(49)	19(0.7)	19(0.7)	170(6.7)	237(9.3)	323(12.7)	245(9.6)	125(4.9)	1155(45.5)	100(3.9)	60(2.4)
TL-1005	1505(59.3)	31(1.2)	31(1.2)	200(7.9)	290(11.4)	364(14.3)	245(9.6)	130(5.1)	1155(45.5)	111(4.4)	70(2.8)