

EHS-SERIES

EHS-SERIES HYDRAULIC SPREADERS

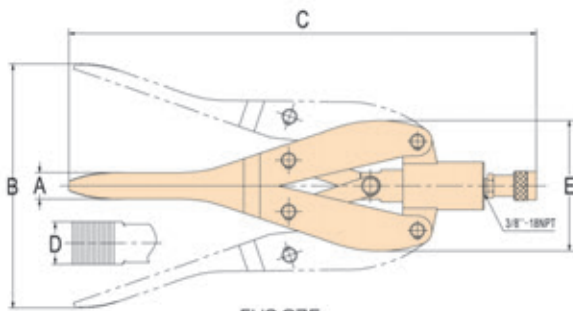
▶ Features

- ◆ Single acting and spring return
- ◆ EHS-075 for long stroke spreading applications
- ◆ EHS-1 for use in very confined work areas

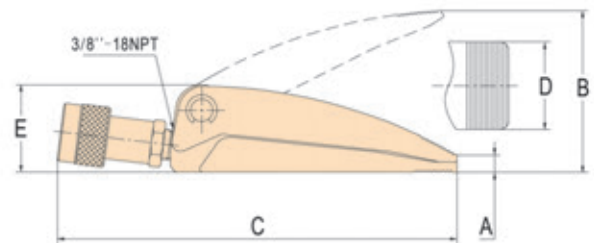


EHS-075

EHS-1



EHS-075



EHS-1

Model	Capacity	Oil Capacity	A	B	C	D	E	Weight (lbs)
	Ton	in ³	in	in	in	in	in	
EHS-1	1.0	0.79	0.39	3.70	9.05	2.00	2.00	5.5
EHS-075	0.75	3.36	1.26	11.50	22.00	2.00	6.18	27.5