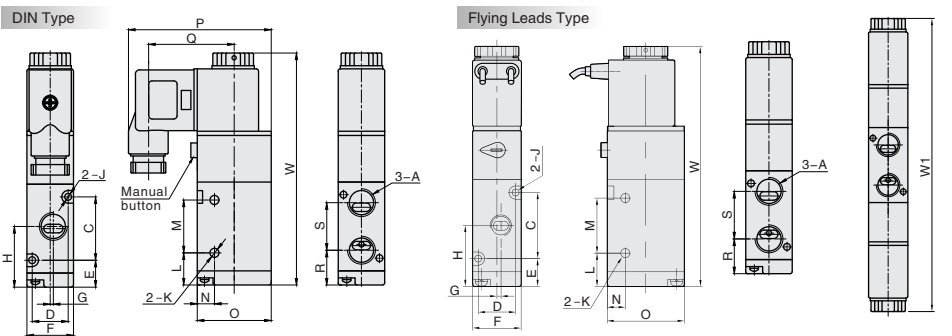


○ Main Dimension

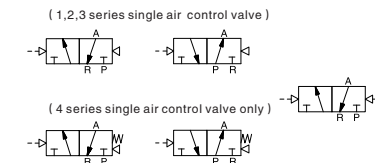
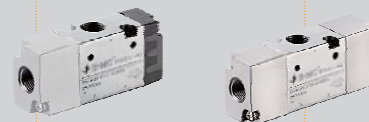
Single Solenoid Valve

Double Solenoid Valve



Model/Sign	A	C	D	E	F	G	H	J	K	L	M	N	O	P	Q	R	S	W	W1*
V3211-M5	M5	19	13	13.2	18	0	22.7	3.3	3.1	12.2	21	7.5	27	54.8	32.8	15.7	14	87.5	129.6
V3211-06	G1/8	19	13	13.2	18	1.5	23.7	3.3	3.1	12.2	21	7.5	27	54.8	32.8	14.7	16	87.5	129.6
V3221-06	G1/8	30	17	12.7	22	0	27.7	3.3	4.3	15.2	25	8.2	35	67.5	40.5	18.5	18.5	109.7	164
V3221-08	G1/4	30	17	12.7	22	1.5	28.7	3.3	4.3	15.2	25	8.2	35	67.5	40.5	16.5	22.5	109.7	164
V3231-08	G1/4	35	20	15	27	0	32.5	4.3	4.3	17.5	30	10.5	40	70	40.5	21.5	22	120.5	176
V3231-10	G3/8	35	20	15	27	2	32.5	4.3	4.3	17.5	30	10.5	40	70	40.5	20.5	24	120.5	176
V3241-10	G3/8	40.5	27	24.8	34	0	45	4.3	5.2	21	48	13.5	50	75	40.5	29.3	31.5	144	198
V3241-15	G1/2	40.5	27	24.8	34	2	45	4.3	5.2	21	48	13.5	50	75	40.5	29.3	31.5	144	198

Note: The dimensions of NO type and NC type are same, the dimensions of N series and V series are same.



○ How to Order?

Series No.	Ways	Positions	Valve Body ID Code	Controls	Initial Status	Port Size	Reset Type	Thread Type
RVA	3: 3 ways	2:2 positions	1: 1Series 2: 2Series 3: 3Series 4: 4Series	1: Single control 2: Double control	Blank: Normal close(N.C) H: Normal open(N.O)	M5: M5 06: 1/8" 08: 1/4" 10: 3/8" 15: 1/2"	Blank: Spring return (Apply to 4 series single control valve) Q: Air return (Apply to 1,2,3 series single control valve)	Blank: G P: PT T: NPT

Order Example:

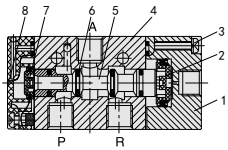
RVA series air control valve, 3/2 way, 2 series valve body size, single control, NC type, 1/4" port size, air return, PT thread
ERP code is: RVA3221-08Q-P

○ Specifications

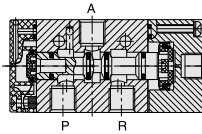
Model No.	RVA3211-M5 RVA3212-M5	RVA3211-06 RVA3212-06	RVA3221-06 RVA3222-06	RVA3221-08 RVA3222-08	RVA3231-08 RVA3232-08	RVA3231-10 RVA3232-10	RVA3241-10 RVA3242-10	RVA3241-15 RVA3242-15
Port size	M5	G1/8	G1/8	G1/4	G1/4	G3/8	G3/8	G1/2
Sectional area(mm)	5.5(CV=0.31)	12(CV=0.67)	14(CV=0.78)	16(CV=0.89)	25(CV=1.40)	30(CV=1.68)	50(CV=2.79)	50(CV=2.79)
Working medium	Clean air(After 40 μm filtration)							
Acting type	External type							
Reset type	Spring reset / Gas reset							
Lubrication	Not required							
Working pressure(MPa)	0.15~0.8							
Guaranteed Pressure(MPa)	1.2							
Working temperature(°C)	-20~70(No freezing)							
Max. acting frequency	5 Cycles/s							
Weight(g)	RVA3211:60 RVA3212:75	RVA3221:116 RVA3222:143	RVA3231:187 RVA3232:220	RVA3241:378 RVA3242:430				

Internal Structure

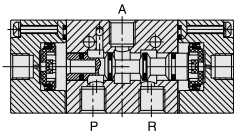
Single Air Control(N.C)



Double Air Control(N.O.)

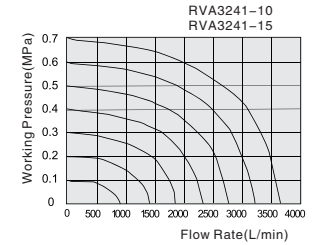
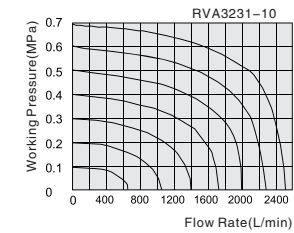
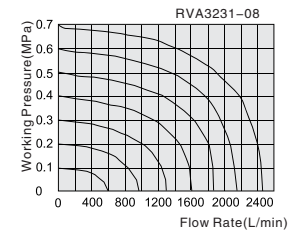


5/3 Ways Solenoid Valve

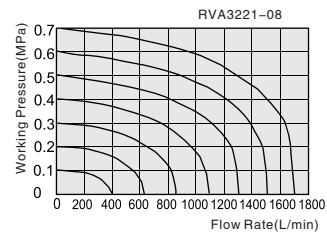
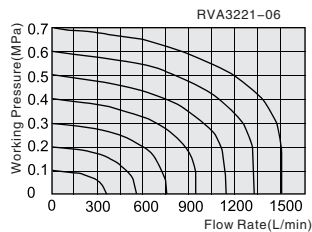
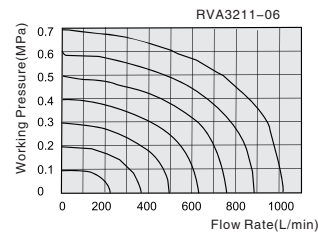
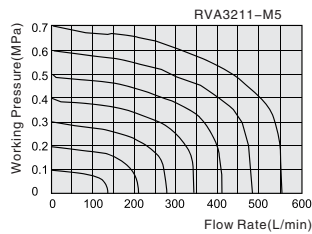


No.	Part Name	Material
1	Air Control Cover	Aluminum Alloy
2	Piston	POM
3	Screw	Carbon Steel
4	Valve Body	Aluminum Alloy
5	Spool	Aluminum Alloy
6	O-ring	NBR
7	Piston	POM
8	Rear Cover	Zinc Alloy

Flow Chart

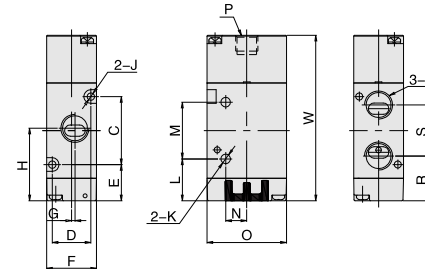


Flow Chart

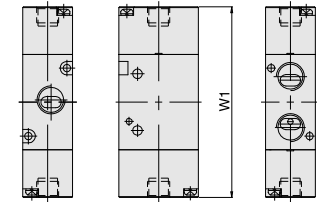


Main Dimension

Single Air Control



Double Air Control



Model/Sign	A	C	D	E	F	G	H	J	K	L	M	N	O	P	R	S	W	W1*
RVA3211-M5	M5	19	13	16.5	18	0	26	3.3	3.1	15.5	21	6	27	G1/8	18.9	14.2	61	70
RVA3211-06	G1/8	19	13	16.5	18	1.5	27	3.3	3.1	15.5	21	6	27	G1/8	18	16	61	70
RVA3221-06	G1/8	30	17	16	22	0	31	3.3	4.2	18.5	25	9.3	35	G1/8	20	22	73	84
RVA3221-08	G1/4	30	17	16	22	1.5	32	3.3	4.2	18.5	25	9.3	35	G1/8	19.8	22.5	73	84
RVA3231-08	G1/4	35	20	19.1	27	0	36.6	4.3	4.3	21.6	30	9.5	40	G1/8	24.6	24	84.6	96
RVA3231-10	G3/8	35	20	19.1	27	2	36.6	4.3	4.3	21.6	30	9.5	40	G1/8	24.6	24	84.6	96
RVA3241-10	G3/8	40.5	27	24.8	34	0	45	4.3	5.2	21	48	11.5	50	G1/8	29.3	31.5	103	116
RVA3241-15	G1/2	40.5	27	24.8	34	2	45	4.3	5.2	21	48	11.5	50	G1/8	29.3	31.5	103	116

Note: The dimension of N.O type and N.C type are same, W1* is the dimension of double control type.